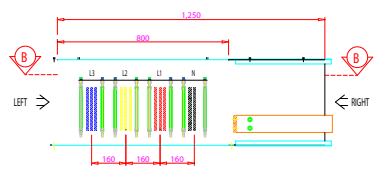
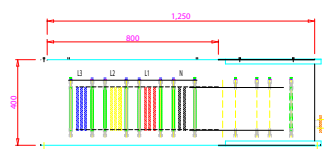


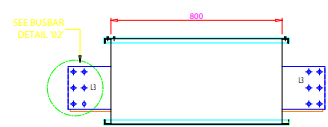
Project: FIFTH GAS SEPARATION PLANT
 Symbol Library 1:
 Symbol Library 2:
 Symbol Library 3:
 Symbol Library 4:
 Autodesk Version 14
 Translator: Rev. A
 Translator: Rev. B
 Translator: Rev. C
 Translator: Rev. D
 Copyright © SIEMENS LTD., THAILAND 2002. All Rights Reserved



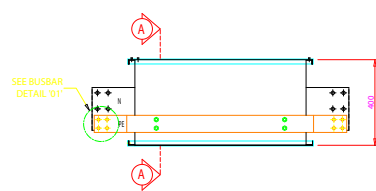
FRONT VIEW



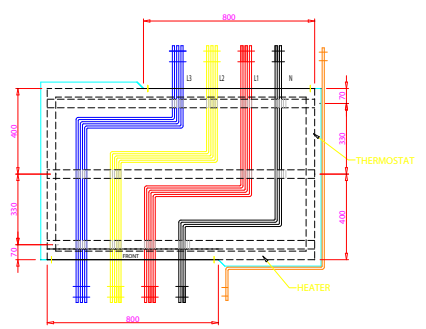
SECTION "A-A"



LEFT VIEW



RIGHT VIEW



SECTION "B-B"

DETAIL FOR BUSDUCT

- SYSTEM VOLTAGE: 400/230V 50Hz
- 3 PHASE 4 WIRES 50Hz
- RATE CURRENT: 5000A
- CONDUCTORS COPPER BUSBARS, BARE, SIZE:
 - ≥200x10 FOR PHASES
 - ≥200x10 FOR NEUTRAL
 - 160x10 FOR GROUND
- ENCLOSURE: SHEET STEEL 2.0 mm THICKNESS
- POWDER PAINTED WHITE-GRAY, COLOR SHADE RAL 7032
- BOTTOM PLATE: STAINLESS SHEET 1.6 mm THICKNESS
- BUSBAR SUPPORTS: GLASS FIBER
- REINFORCED INSATURATED POLYESTER

3	REV. FOR CONSTRUCTION	14-02-04	SC	Date	25-08-03
1	REV. AS PER SECL COMMENT	09-10-03	SC	Draw.	SUPPACHAI C.
0	FOR APPROVAL	17-09-03	SC	Appr.	ANUSORN D.

FIFTH GAS SEPARATION PLANT PROJECT
 SG-1007
 NO301484



DETAIL SECTION FOR BUSDUCT INDOOR TYPE
 3Ph, 4W, 5000A
 (TYPE A1S)

Dwg no. 70-4-0204.10-3128-598-07

Sheet 1 of