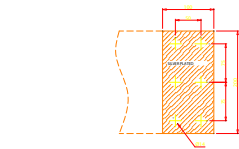
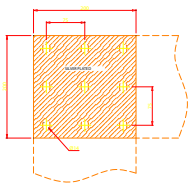


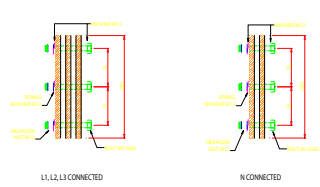
DETAIL '01'
PE CONNECTED 90° VERTICAL &
180° HORIZONTAL WISVER PLATED



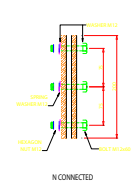
DETAIL '02'
CONNECTED 180° HORIZONTAL
WISVER PLATED



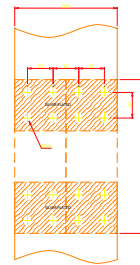
DETAIL '03'
CONNECTED 90° VERTICAL WISVER PLATED



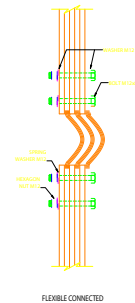
L1, L2, L3 CONNECTED



N CONNECTED



DETAIL '04'
CONNECTED 90° VERTICAL WITH FLEXIBLE BUSBAR
FOR MDR & TR. SDC WISVER PLATED



FLEXIBLE CONNECTED

BUSBAR CONNECTED SCHEDULE			
DETAIL No.	ITEM	DESCRIPTION	QTY.
1	1	BOLT M16x45	4
	2	WASHER	8
	3	HEXAGON NUT	4
	4	SPRING WASHER	4
2	1	L1, L2, L3 BOLT M12x40	18
	2	N/ BOLT M12x40	6
	3	WASHER	48
	4	HEXAGON NUT	24
3	1	SPRING WASHER	24
	2	L1, L2, L3 BOLT M12x40	27
	3	N/ BOLT M12x40	9
	4	HEXAGON NUT	27
4	1	SPRING WASHER	36
	2	L1, L2, L3 BOLT M12x40	36
	3	N/ BOLT M12x40	12
	4	HEXAGON NUT	36